

## Web Link

The International Sculpture Center ([www.sculpture.org](http://www.sculpture.org)) is an excellent site for information on contemporary international sculpture and sculptors.

Its Web site is the most comprehensive resource for information on sculpture. It features *Portfolio*, an online slide registry and referral system that provides detailed information about artists and their work. *Opportunities*, a membership service, has commissions, jobs, and other professional sculpture listings, plus the ISC newsletter and extensive information about the world of sculpture.



## Career Profile

# Sheryl McRoberts

Sheryl received her master's degree from St. Cloud State University in sculpture and went on to Indiana University to earn her MFA in sculpture. She teaches at Normandale Community College in Bloomington, Minnesota. She has received numerous commissions and grants, including a Fulbright research grant.

*What do you like most about teaching?*

**Sheryl:** I always find wonderful, wonderful students. I think that the world is so visual right now that people who have a good background in the arts can do lots of things.

*How did you become interested in sculpture?*

**Sheryl:** I always drew, but I was very involved in music, and always thought that I was going to be a music major. It was not until my junior year of college that I decided to take one of those tests that told of your interest. I was feeling that music was not right. Art received, by far, the highest rating...though I had never taken an art class. I decided, "Let me try it," so I started. I took a sculpture class the year I was in Germany. It was



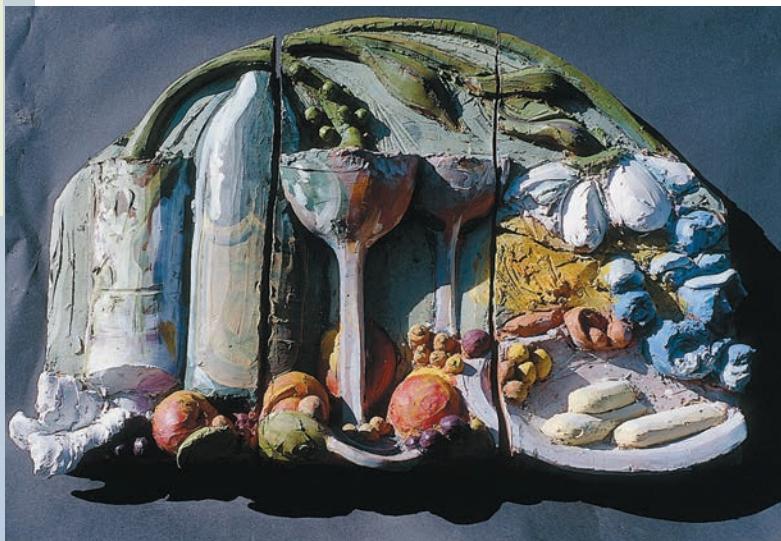
very much classical modeling. I didn't get that from my classes in the United States, because it was all conceptual. I loved working with clay.

*How do you choose your media and subject matter?*

**Sheryl:** I gradually just started working in the relief format. I feel like I am painting with clay. Basically, I am studying seventeenth- through twentieth-century still-life painting. I am trying to re-create the painting three dimensionally, and interpret the way the artist created color on the painting—blurring the boundaries between painting and sculpture.

*What kind of preparation do you advise for a career in art?*

**Sheryl:** I tell students to live more in the present. If you are really true to yourself, follow your dreams. You don't have to worry about the competition because you will be the best at whatever you choose to do. Get a really good foundation and then interests will be revealed to you eventually.



**Fig. 1-42. Sheryl creates a high relief with modeling. In the final process she also adds color. How does this technique blur the boundaries between painting and sculpture?**

Sheryl McRoberts, *Still Life*, 1998.

Clay, oil paint, 36" x 24" x 6" (91.5 x 60.1 x 15 cm).